

ACCURATE LOCK AND HARDWARE CO. LLC.

Manufactures of
CUSTOM LOCKS AND ARCHITECTURAL HARDWARE

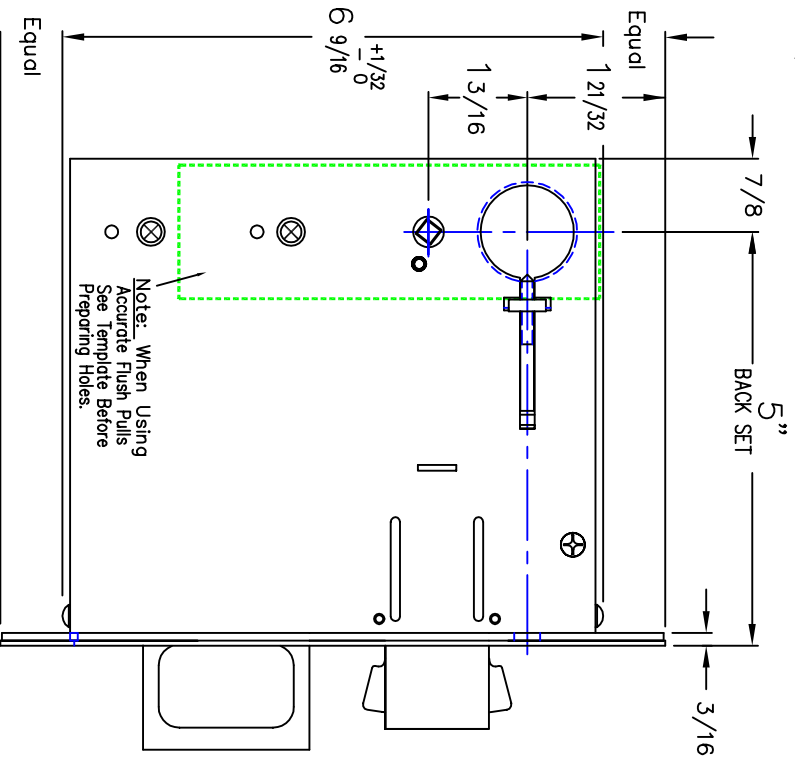
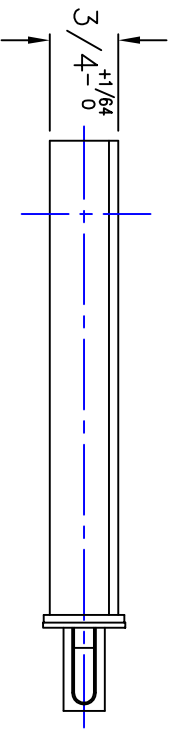
ANNIE PLACE, STAMFORD, CT. 06902
(203) 348-8865 FAX (203) 348-5234
E-MAIL: Accurateh@aol.com
www.Accurate.to

2002CPDL SERIES

POCKET DOOR LOCK INSTALLATION

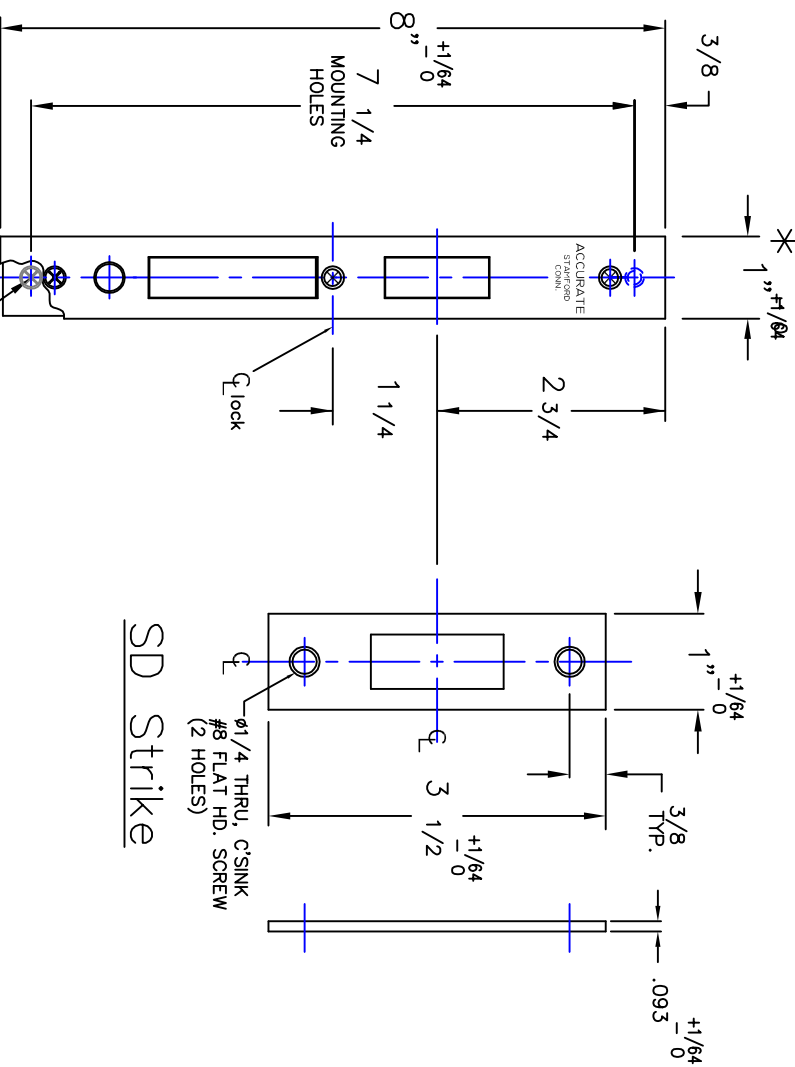
TEMPLATE 5" Backset

Note: All Dimensions Reflect Suggested Mortise Prep Dimensions. (Actual Lock Dimensions Are Slightly Smaller).



2002 CPDL-1	1-1/4 Dia. Cylinder Outside Only	2002 CPDL-2	1-1/4 Dia. Cylinder Both Sides	2002 CPDL-3	1-1/4 Dia. Cylinder Outside Only	2002 CPDL-4	5/8 Dia. turn piece inside only	2002 CPDL-5	5/8 Dia. turn piece inside only
-------------	----------------------------------	-------------	--------------------------------	-------------	----------------------------------	-------------	---------------------------------	-------------	---------------------------------

Find Catalog Numbers Which Will Show Cutouts For Functions Desired. Refer to Composite Template Above For Locations And Sizes Of Holes.



* - 1 1/4 WIDE FRONT AVAILABLE UPON REQUEST