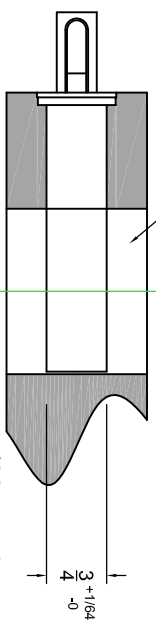
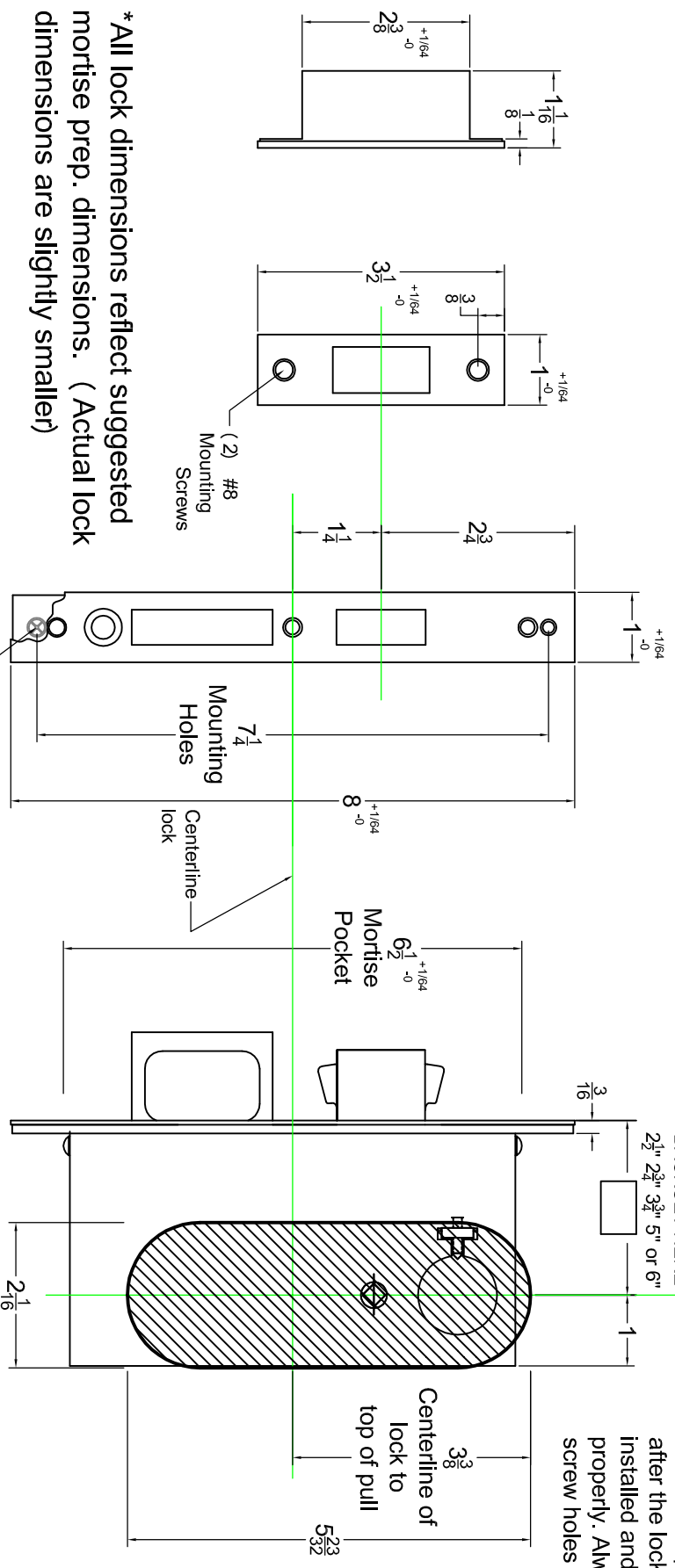


2002CPDL-1	2002 CPDL-2	2002 CPDL-3	2002 CPDL-4	2002 CPDL-5
Bore half way - OUTSIDE ONLY	Bore Thru Door	Bore Thru Door	Bore half way - INSIDE ONLY	Bore Thru Door

*Important: CHECK CHART BEFORE BORING ANY HOLES



*Mount the trim with the screws provided, after the lock is installed and works properly. Always pre-drill screw holes



* All lock dimensions reflect suggested mortise prep. dimensions. (Actual lock dimensions are slightly smaller)

#2002 Pocket door lock for use with:
 A2002 or CA2002 Trim
 N2002 or CN2002 Trim
 O2002 or CO2002 Trim

Template #2002A/CA

Accurate Lock and Hardware Co., LLC
 One Annie Place
 Stamford, CT 06902
 P (203) 348-8865 F (203) 348-5234
 Sales@accuratelockandhardware.com



Made in USA